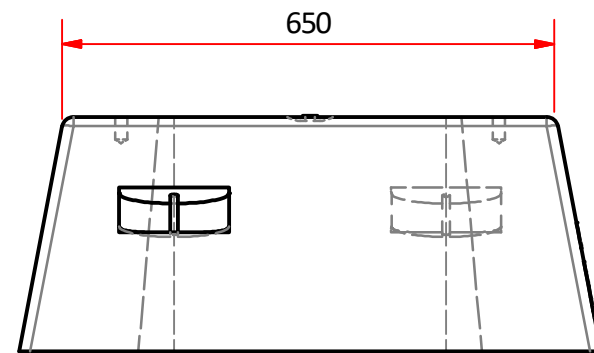
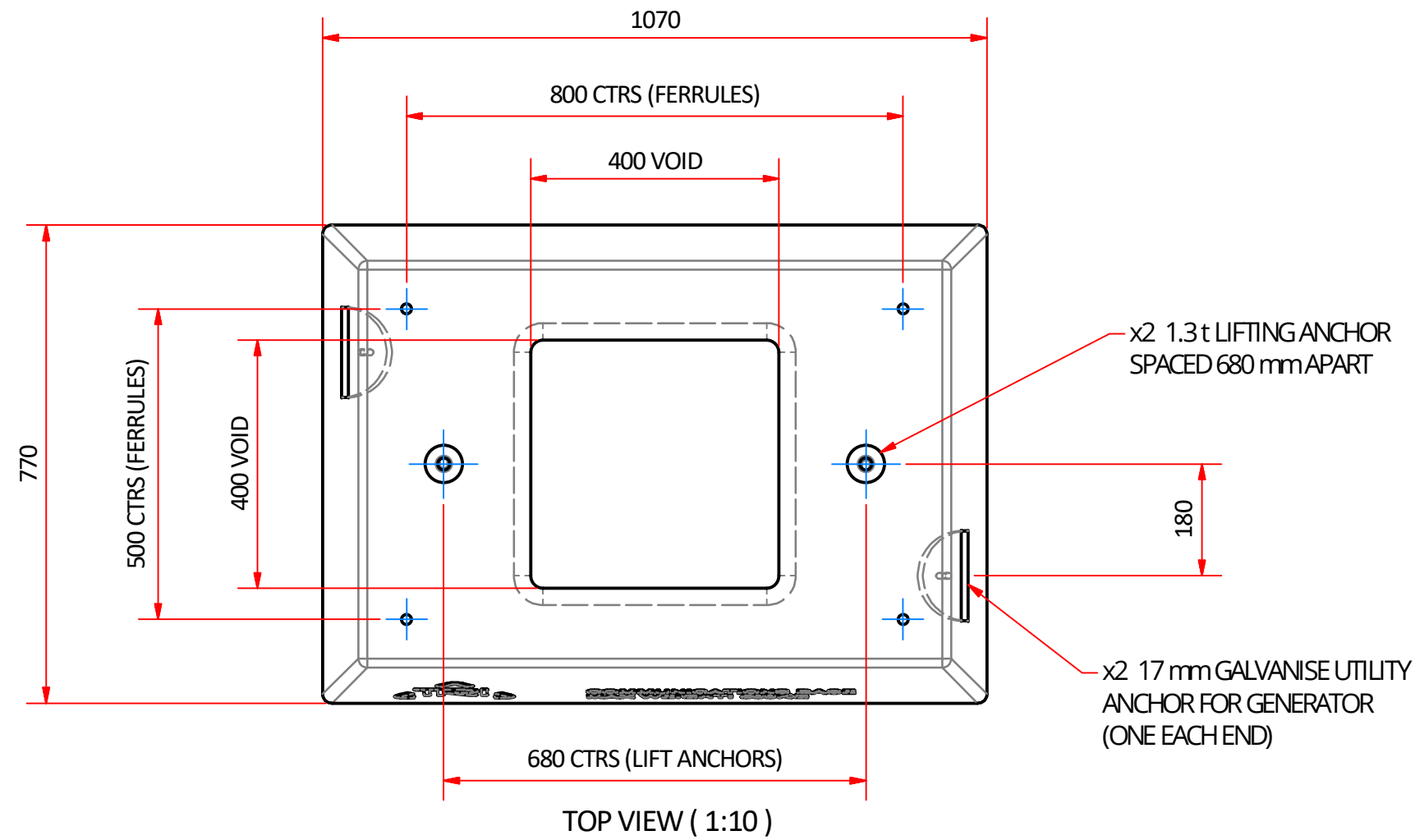
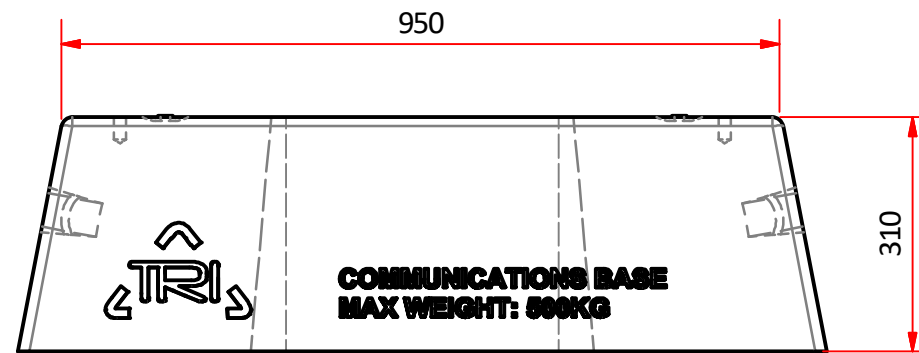


- NOTES:
- 1. REFER TO MAIN ROADS (QLD) DRAWING SD1679
 - 2. BASE TO BE MARKED AS INDICATED
 - 3. CONCRETE STRENGTH 40 MPA



LH END VIEW (1:10)



FRONT VIEW (1:10)

- General Notes;
- 1. All dimensions are in mm
 - 2. Tolerance on all dimensions ± 3 mm unless stated otherwise

Copyright: TRI Underground Australia Pty Ltd

This instruction and all the information herein is the property of TRI Underground PTY LTD. It must not be copied, made public or used directly or indirectly, including manufacture of the product shown herein, without written approval. This instruction is loaned subject to these conditions and subject to return on demand.

Commercial in confidence

	Material CONCRETE	Designed by IMD	Checked by HL	Approved by HA	Date 22/03/2022	Date 22/02/2022	
	Weight APPROX. 500 kg	TRI Underground Australia			Title TELECOMMUNICATION 'ITS' FIELD CABINET BASE		
	Finish OFF MOULD				Dwg No. 13714	Edition A	Sheet 1 / 1